

PICNIC/BBQ AREAS

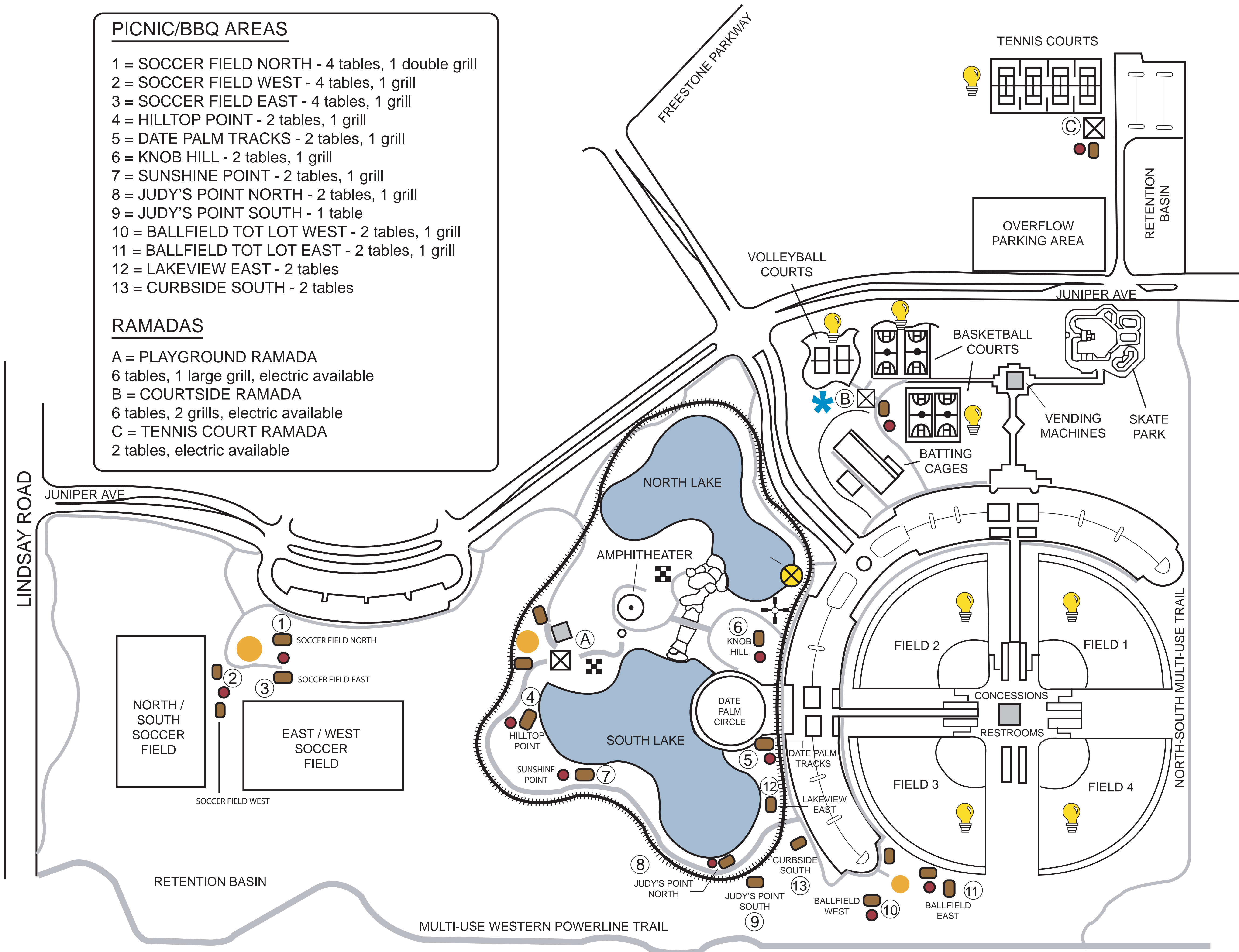
- 1 = SOCCER FIELD NORTH - 4 tables, 1 double grill
- 2 = SOCCER FIELD WEST - 4 tables, 1 grill
- 3 = SOCCER FIELD EAST - 4 tables, 1 grill
- 4 = HILLTOP POINT - 2 tables, 1 grill
- 5 = DATE PALM TRACKS - 2 tables, 1 grill
- 6 = KNOB HILL - 2 tables, 1 grill
- 7 = SUNSHINE POINT - 2 tables, 1 grill
- 8 = JUDY'S POINT NORTH - 2 tables, 1 grill
- 9 = JUDY'S POINT SOUTH - 1 table
- 10 = BALLFIELD TOT LOT WEST - 2 tables, 1 grill
- 11 = BALLFIELD TOT LOT EAST - 2 tables, 1 grill
- 12 = LAKEVIEW EAST - 2 tables
- 13 = CURBSIDE SOUTH - 2 tables

RAMADAS

- A = PLAYGROUND RAMADA
6 tables, 1 large grill, electric available
- B = COURTSIDE RAMADA
6 tables, 2 grills, electric available
- C = TENNIS COURT RAMADA
2 tables, electric available

LEGEND

- ⚓ Railroad Amusement Ride
- ☒ Ramada
- Play area
- Restroom
- ⊙ Amphitheater
- Open Space
- ▭ Picnic Table
- BBQ Grill
- ⊗ Train Depot
- ⊕ Amusement Activity Area
- ✳ Inflatable Play - Structure area (Electric @ Ramada)
- 🌊 Lake
- 💡 Lighting
- ♠ Checkerboard table



Amenities:

2 lakes, fishing, 4 lighted adult softball fields, 2 soccer fields, 2 lighted sand volleyball courts, 4 lighted full basketball courts, 4 lighted tennis courts, model railroad, amusement area (train depot, carousels, mini ferris wheel), skate park, batting cages, amphitheater, 3 ramadas (see legend), 3 play areas, picnic tables, bbq grills, 3 restroom facilities, 2 checkerboard tables, benches, bike racks, multi-use/equestrian trails, 472 parking spaces (24 accessible parking spaces)

FREESTONE DISTRICT PARK

1045 E. Juniper Avenue
 Gilbert, AZ 85234
 (SE corner of Lindsay and Juniper, just south of Guadalupe)

